

COMUNE DI FROSINONE



Camera di Commercio
Frosinone

C.C.I.A.A. FROSINONE - SEDE STORICA
VIA ALCIDE DE GASPERI n.1

N.C.E.U. F. 18 Part.IIa 185

C.C.I.A.A. FROSINONE
FROSINONE - VIALE ROMA n.9

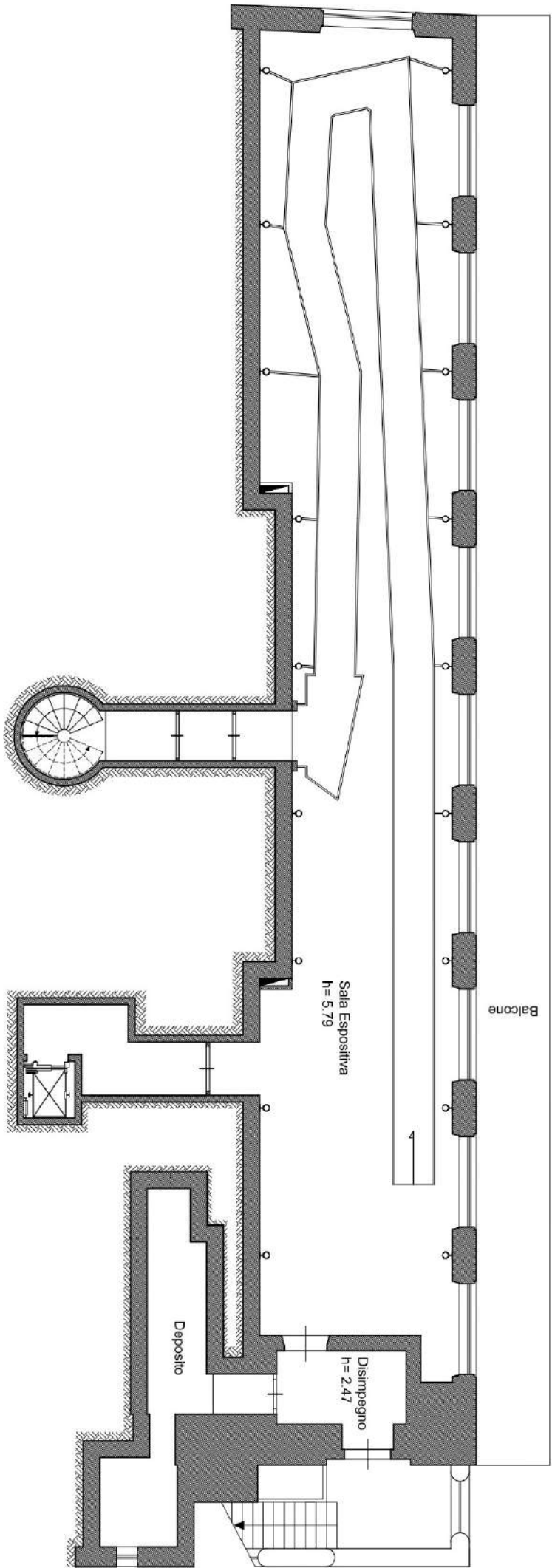
Il Legale Rappresentante
Pigliacelli Marcello

SCALA: 1:100

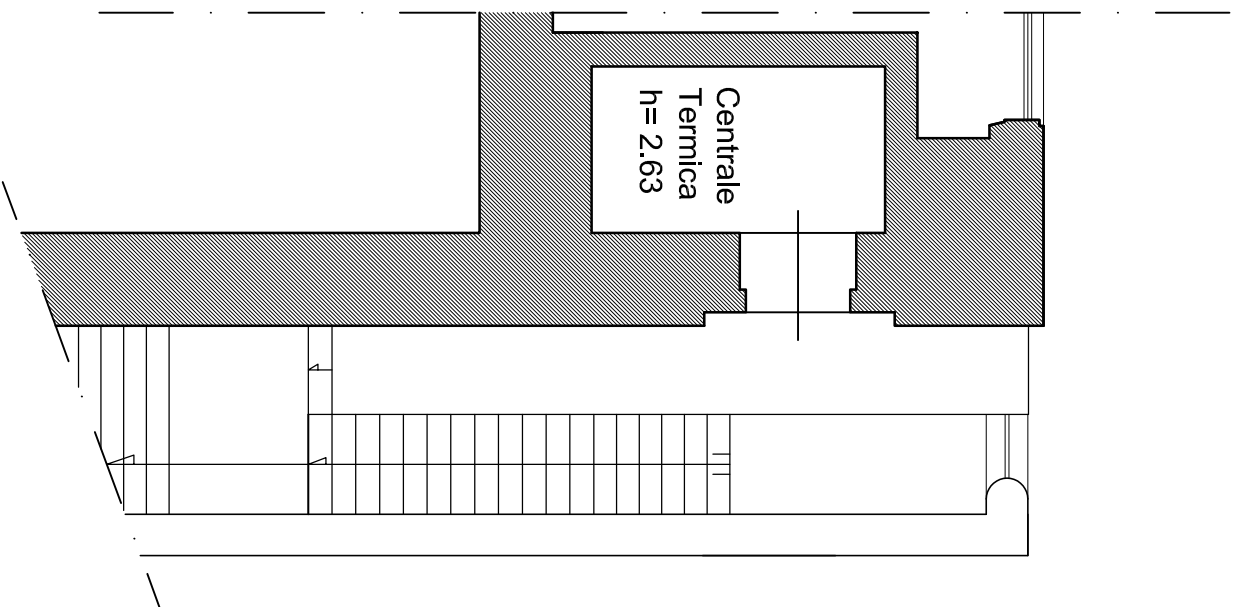
DATA: Gennaio 2017

" PLANIMETRIE IMMOBILE "

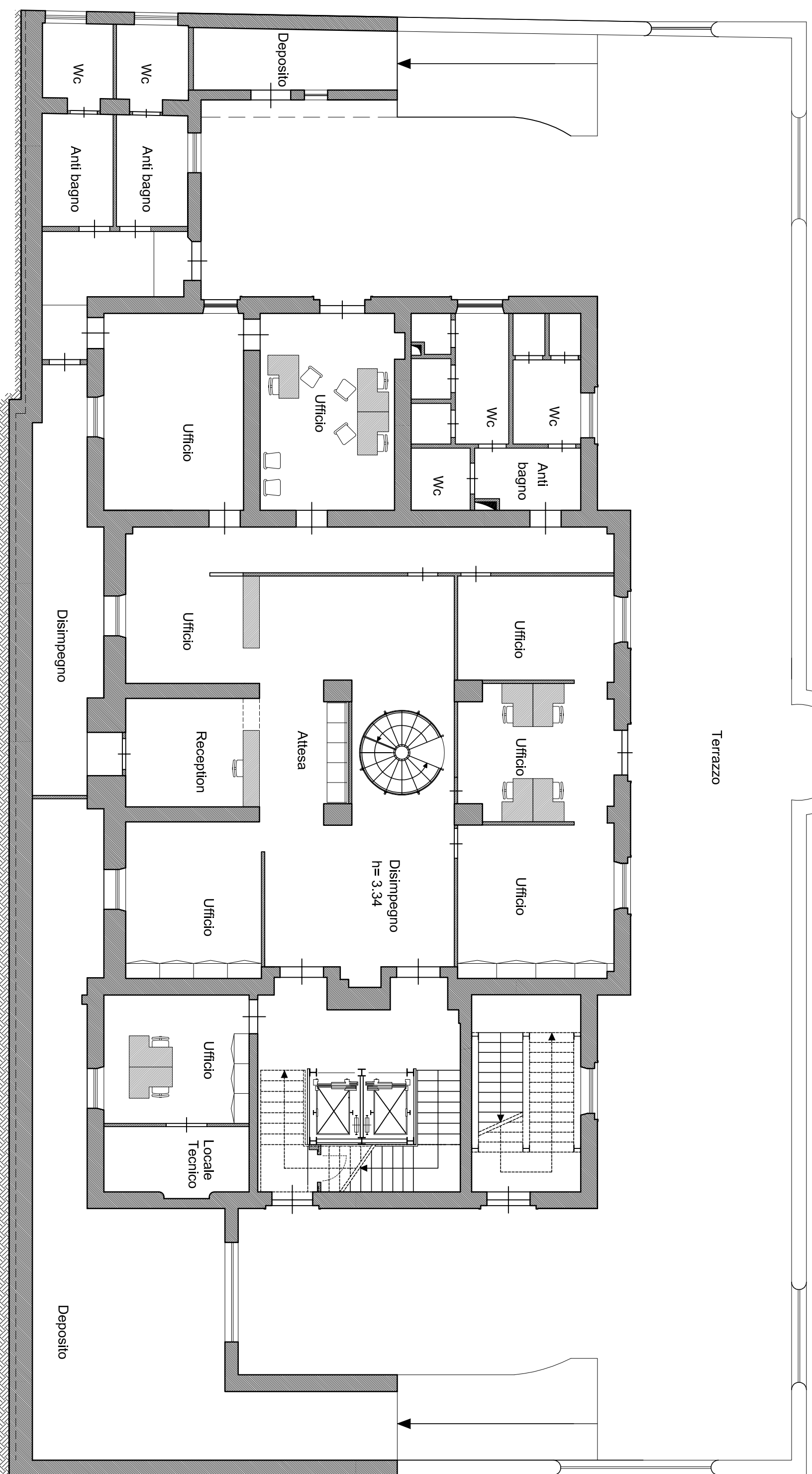
PIANO SECONDO SEMINTERRATO



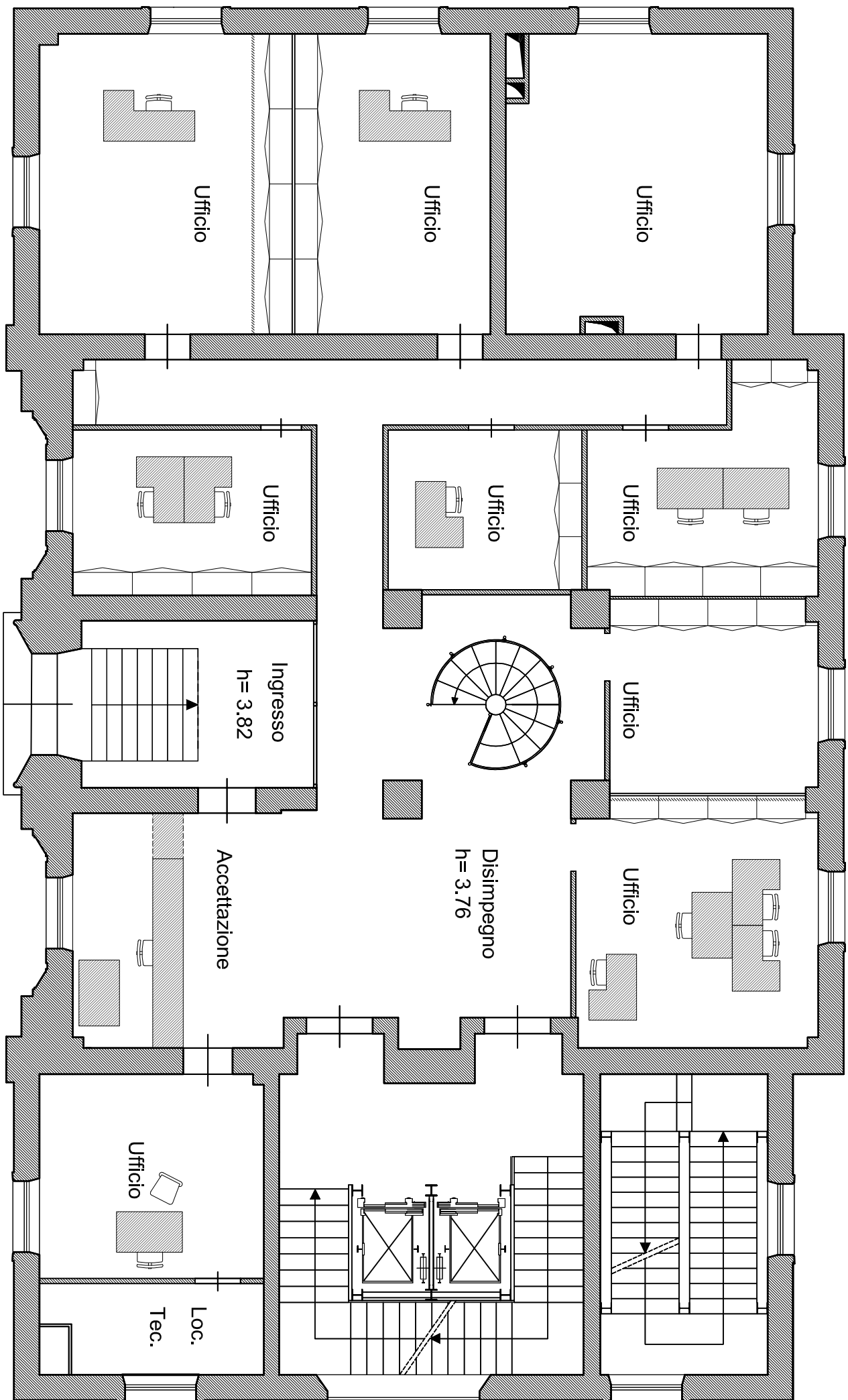
PIANO AMMEZZATO



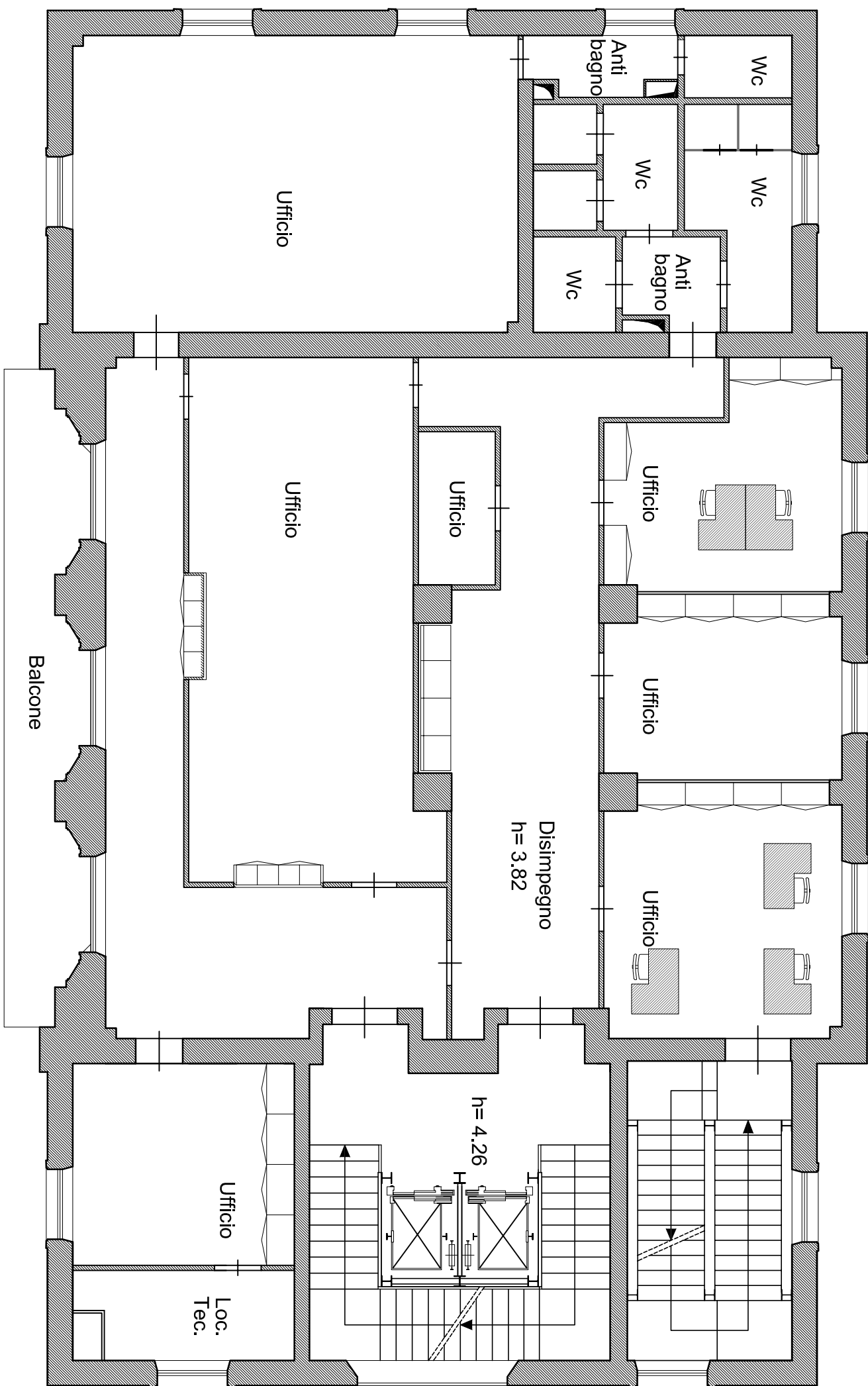
PIANO PRIMO SEMINTERRATO



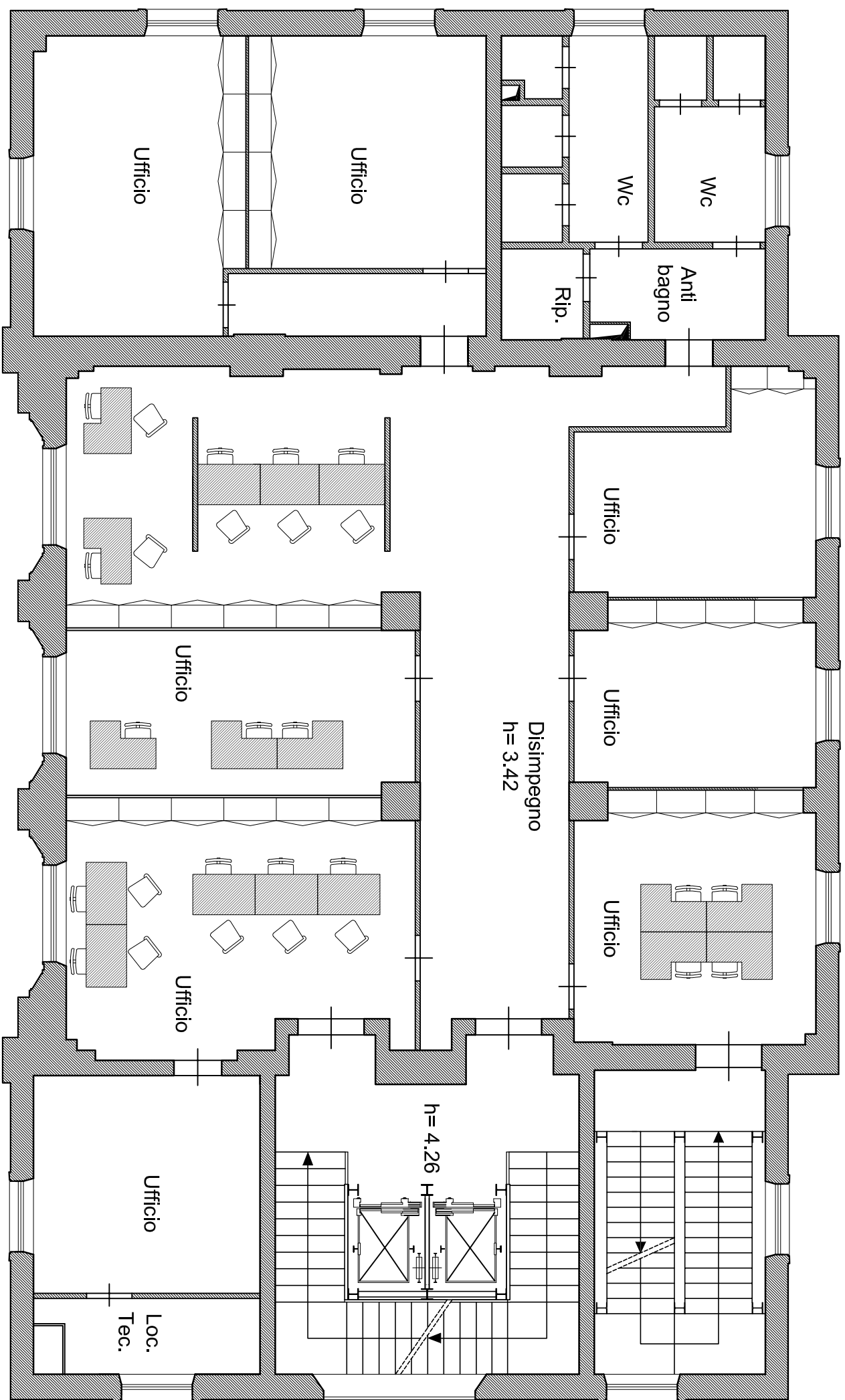
PIANO TERRA RIALZATO



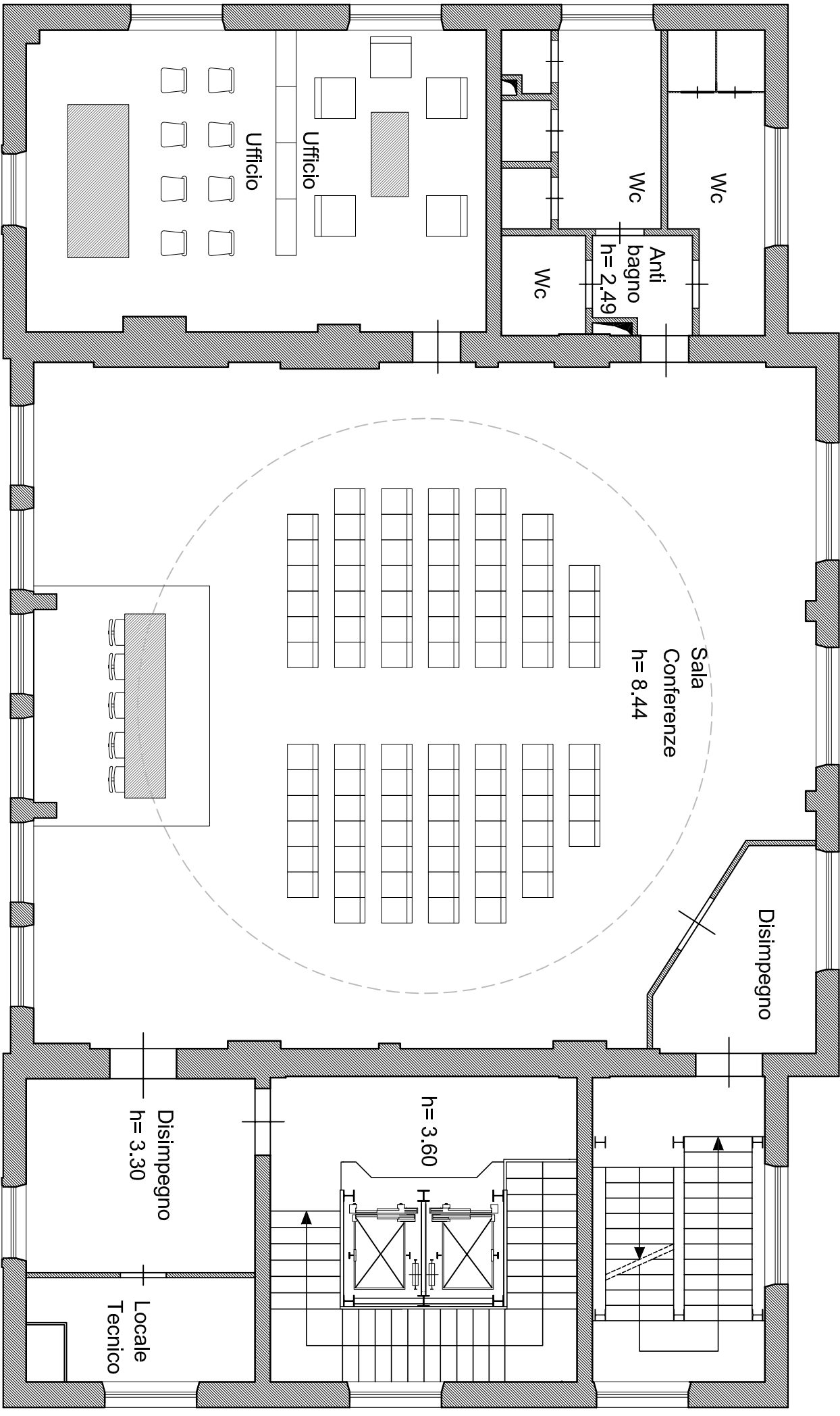
PIANO PRIMO



PIANO SECONDO



PIANO TERZO



PIANO QUARTO - COPERTURA

